

# WATT PLAZA NEWS

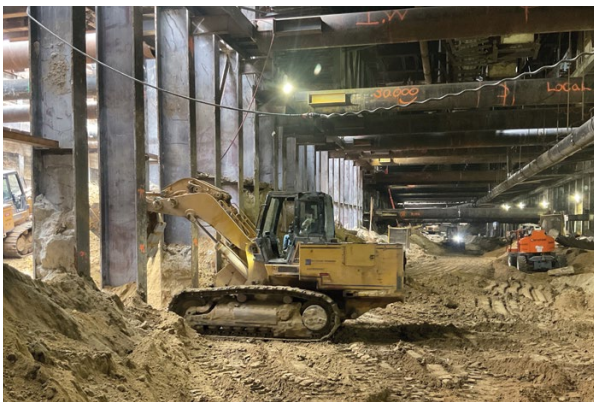
2022  
1<sup>ST</sup>  
EDITION

## Metro Purple Line Extension – Constellation Station Update

The construction work currently taking place in Century City for the future Metro Purple (D Line) Constellation Station is highlighted below:

### Relocation of Sanitary Sewer and Storm Drains

- Utility work has begun to relocate a sanitary sewer and storm drain from within the project footprint. This work is anticipated for completion in quarter 3 of 2022.
- New traffic control is in place around the station area to accommodate sanitary and sewer storm drain relocation work. During this time, left turns are restricted from northbound Avenue of the Stars onto westbound Constellation Bl. Avenue of the Stars will also be reduced to one lane north and southbound at Constellation Bl.
- During relocation work, traffic lane closures will be required overnight on Avenue of the Stars.



Underground excavation activities for the future Constellation Station.

### Ongoing Station Excavation and Traffic Configuration

- Excavation continues for the underground station beneath Constellation Bl and is anticipated for completion in the 1st quarter of 2023. This work takes place 24 hours a day Monday through Friday.
- Partial traffic lane closures are currently in place on Constellation Bl to facilitate station excavation, hauling, and material delivery for station construction. Eastbound and westbound vehicle access on Constellation Bl is being maintained between Century Park West and Century Park East.
- Excavation of the station entrance is also underway, and activities in support of excavation will be ongoing.
- All driveways are accessible. The Fairmont Century Plaza event driveway is accessible from eastbound Constellation Bl at Century Park West. Craft Restaurant valet is located on the south side of Constellation Bl east of Avenue of the Stars.

### Next Community Meeting: Everyone welcomed to join!

- Sections 1, 2, and 3: Wednesday, August 3, 2022 from 12 to 1pm | [Meeting Link](#)

To be added to the Purple (D) Line stakeholder list for construction updates, please email us at [purplelineext@metro.net](mailto:purplelineext@metro.net).



## WHAT'S INSIDE

EMPLOYEE SPOTLIGHT

WATT PLAZA -  
UL Verified Healthy Building

OUR COMMUNITY

RETAIL AMENITIES

REMINDERS

RJ Westmore  
Watt Plaza Electronic Tenant Handbook



# EMPLOYEE SPOTLIGHT



## Eddy Ruiz

Eddy Ruiz has been with ABM for 32 years and has been a member of the Watt Plaza Janitorial team for 18 years. In May 2021, he became our newest addition to the Day

Porter team working during the day. He arrives to work daily with an enthusiastic, positive attitude and is always willing to lend a helping hand to his fellow co-workers.

Eddie came to this country in 1989 from Guatemala seeking better opportunities. He has been married for 17 years and has three wonderful children. Aside from work, Eddie loves to swim and enjoys going to the movies with his family.

Thank you for all your hard work Eddy!

# OUR COMMUNITY

## Westfield Century City Mall

### Capri

Visit Capri, a new pop-up dining experience at Eataly LA! Discover a vibrant vision of southern Italy with authentic regional cuisine and refreshing beverages in an atmosphere that will transport you to the coastline of Capri right in the heart of Los Angeles.

### Pudu Pudu: A spoonful of magic

Get \$2 off when you say the MAGIC word! pudu pudu is Century City's pudding parlor that's turning the anytime classic into magic in your mouth! Eight enchanted flavors will WOW your taste buds with a magical combination of fresh fruit and health-boosting superfood toppings. Low calorie and vegan options are made fresh before your very eyes using natural ingredients, making this one irresistible anytime indulgence! Try pudu pudu and taste a spoonful of magic! Valid until July 31.

## Watt Plaza - Allegiate Gym

We are pleased to announce the construction of the Allegiate gym set to commence in June with an anticipated completion in September. Allegiate is a class-based fitness gym focused on strength training. Their different classes and programs are designed for both beginners and those with more experience. Allegiate was co-founded by Army West Point's former head strength & conditioning coach and two USC football players. The gym is designed to give everyone access to the same fitness experience—and results—as the best athletes in the country.



To learn more about their memberships and programs, please email [cody@allegiategym.com](mailto:cody@allegiategym.com)

## Century City Chamber of Commerce

Many opportunities to gain more visibility in the community and treat your employees and clients to networking at special events! Register at <https://business.centurycitycc.com/events/search?from=5/1/2022&to=6/30/2022>

### Upcoming events

**July 28:** Happy Hour at the Craft

**August 25:** Rock & Roll Casino Night

**September 19:** Golf Tournament at Angeles National Golf Club

**October 19:** Woman of Achievement Awards at the Beverly Hilton (nominations open in June!)

## Century City Farmers Market

Visit the Farmers Market at 10100 Santa Monica Blvd, on the plaza, every Thursday from 10:00 a.m. to 2:00 p.m. The market proudly features a variety of farmers, flowers, artisanal food products and prepared lunch options.



Century City Chamber of Commerce presents  
**ROCK 'N ROLL CASINO NIGHT**

**AUGUST 25 • 5-9 PM**

**OPEN BAR • MUSIC • FOOD • FUN!!**

*Benefiting Outreach Through The Arts*

THE TERRACE | 10100 SANTA MONICA BLVD.

FOR MORE INFO VISIT [CENTURYCITYCC.COM](http://CENTURYCITYCC.COM)

DESIGN MANIFEST

## RETAIL AMENITIES

### Aztec Auto Detailing

#### Car Wash

310-962-1882

### Federal Express

310-203-9928

### 1st Century Bank

310-270-9500

### Mickey Fine

310-734-7714

### Mystic Flowers & Gardens

310-284-3417

### Noble Cleaners

310-552-3377

### Notary Services

310-789-2179

### Parking:

- Electric Charging Stations

- Front Door Club Valet

310-789-2178

### Starbucks Coffee

310-553-8226

### Taco Limon / Pizza Bene

310-286-0464

### Sweetgreen Outpost

Center Lobby by the  
conference rooms

# Watt Plaza – UL Verified Healthy Building

Watt Plaza is officially  
a UL Verified Healthy  
Building for Indoor Air  
and Water.

As part of our commitment to the health and wellness of our occupants, we recently underwent an extensive verification process to earn the UL Verified Healthy Building for Indoor Air and Water Mark. One of the most respected names in safety, security and sustainability for buildings, UL's program demonstrates that our buildings have excellent indoor air quality as well as water quality for both human consumption and prevention of waterborne pathogens.

To achieve the UL Verified Healthy Building for Indoor Air and Water Mark, we participated in an audit in addition to undergoing on-site visits, which included visual inspections and performance testing. To maintain our verification, surveillance will continue twice a year to ensure we continue to have indoor air and water quality performance.



Testing methods used to verify both indoor air and water quality are aligned with industry-recognized, third-party organizations, such as the Environmental Protection Agency (EPA), the National Institute for Occupational Safety and Health (NIOSH), the World Health Organization (WHO), the American Society of Heating, Refrigerating and Air-Conditioning Engineers (ASHRAE), and the Occupational Safety and Health Administration (OSHA) to name a few. Where lab sampling is necessary, testing methodologies are informed by the EPA Compendium of Methods, ASTM D5197 and TO-17 for air sampling and EPA methods for water. We are proud of having achieved this milestone toward supporting healthier indoor environments.



Mickey Fine  
PHARMACY since 1962

# TRAVEL CHECKLIST WITH MICKEY FINE

✓ Travel Vaccinations

✓ Covid Testing

✓ Women's Health Care  
(UTI/Yeast Infection)

✓ Travel's Diarrhea

✓ Influenza Medicine

✓ Malaria Medicine

[www.mickeyfine.com](http://www.mickeyfine.com)

For questions, email: [tiffany@mickeyfine.com](mailto:tiffany@mickeyfine.com)

**AZTEC AUTO  
DETAILING  
& CAR WASH**

**Aztec is now open**

every Thursday, from 8:00 a.m.  
to 5:00 p.m., weather permitting.

They are located at the  
North West corner, Level 1  
of the parking garage.

For additional  
information, please call  
**310-962-1882.**

## REMINDERS

### RJ Westmore Training

Watt Plaza is partnered with RJ Westmore to provide our tenants with the most current Emergency Preparedness Training for the following areas/topics:

**FIRE LIFE SAFETY    BOMB THREAT**  
**FLOOR WARDEN        MEDICAL EMERGENCY**  
**EARTHQUAKE            POWER FAILURE**

Please note in accordance with the Los Angeles Fire Life Safety Code LAMC 57.409.1 it is **mandatory** for all High Rise Occupants to participate in the online training.

You can find more information on our online tenant handbook at the following direct link:

<https://www.wattplaza.info/toc.cfm>

### Newly Redesigned Watt Plaza Electronic Tenant Handbook

[www.wattplaza.com](http://www.wattplaza.com)

The information provided in our Electronic Tenant® Handbook is intended to provide you with a clear understanding of Watt Plaza and to facilitate your company's operations. Please take the time to familiarize yourself with the helpful information provided and note that the Building Management Office is available to assist with any inquiries or concerns.

Did you know that your suite has designated Suite Contacts?

Each suite has a Daily Contact and Executive Contact on file with the Building Management Office who are responsible for making requests on behalf of your suite. Can you identify the designated contacts in your suite?

**WATT  
PLAZA**